

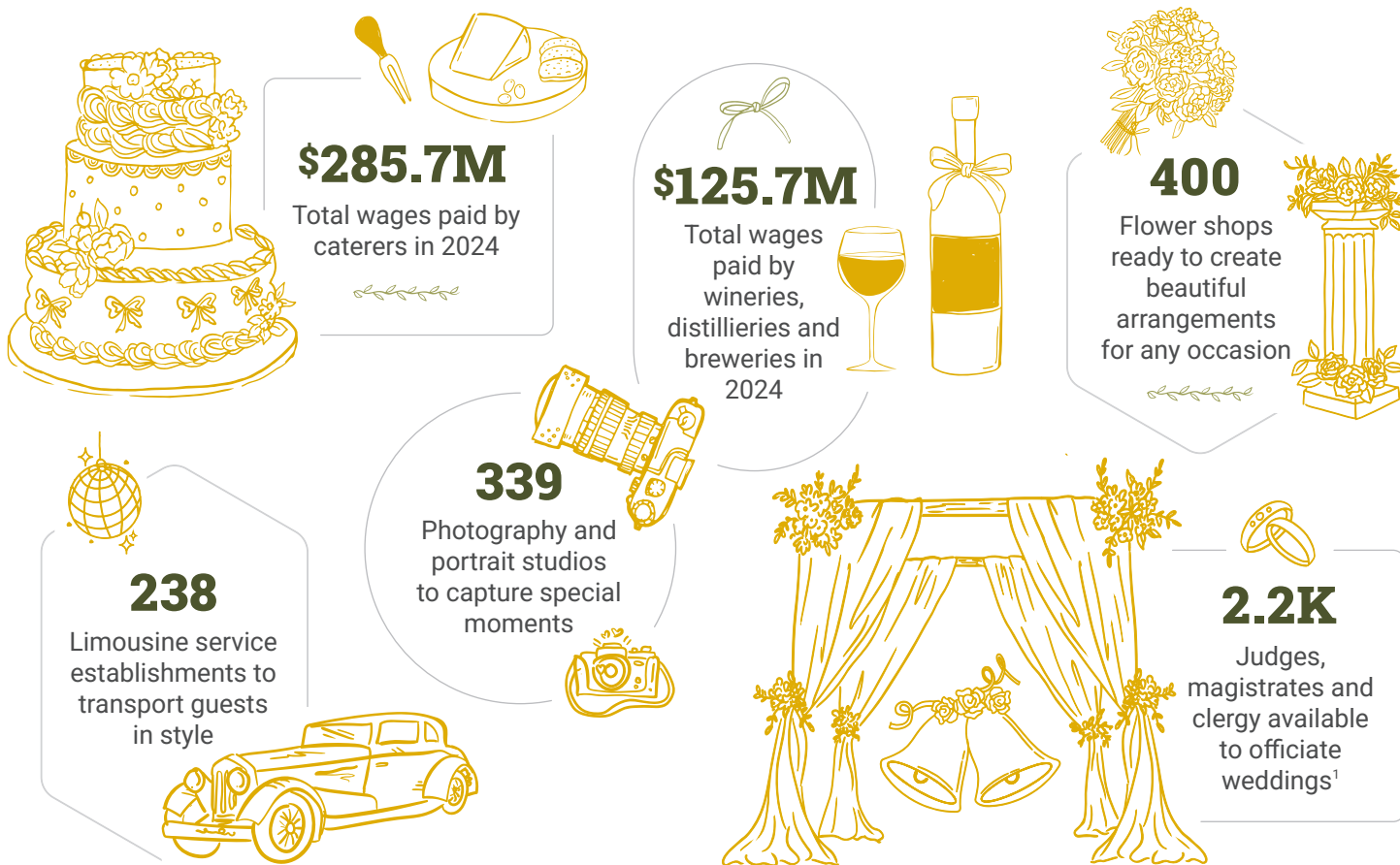
Labor Market Spotlight

Celebration Season: The Industries Powering New Jersey's Special Moments

Issue No. 26, Volume 3: August 2025

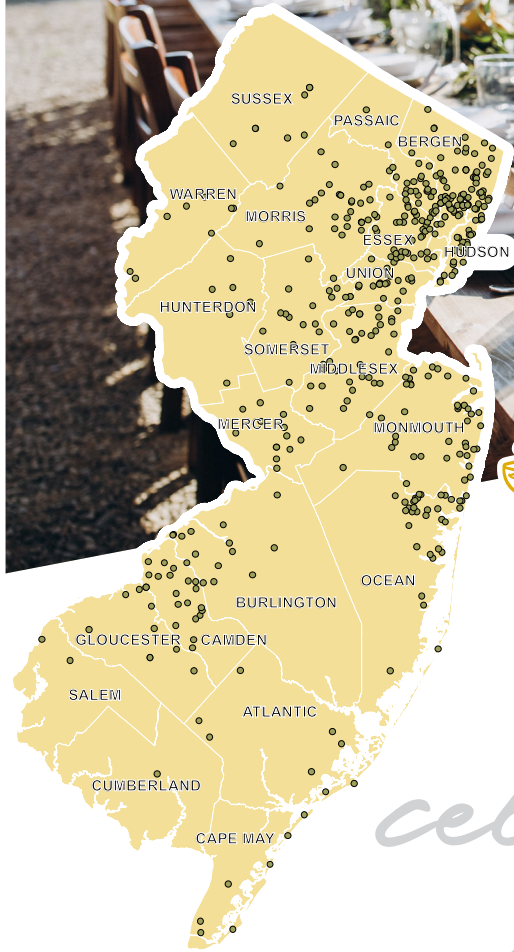
With celebration season in full swing, this edition of Labor Market Spotlight highlights the businesses and workers who make life's milestone moments unforgettable. From weddings to graduations and other gatherings, these events do more than bring joy—they support jobs, drive spending, and strengthen New Jersey's economy.

Across the state, New Jersey businesses offer everything people need to celebrate in style. With 1,070 hotels and 480 caterers, guests are welcomed and well-fed. Over 1,800 workers in formalwear, costume rental, and apparel shops are dedicated to helping people look their best. For the perfect gift, 710 jewelry stores offer brilliance for every occasion. And when it's time to raise a glass, New Jersey's 250 wineries, breweries, and distilleries provide the perfect pour. All of this is set against the stunning backdrop of the Garden State's 130 miles of scenic shoreline, charming historic towns, cascading waterfalls, and breathtaking mountain views.



Office of Research
and Information

[NJ.GOV/LABOR/DATA](https://nj.gov/labor/data)



CATERING ESTABLISHMENTS

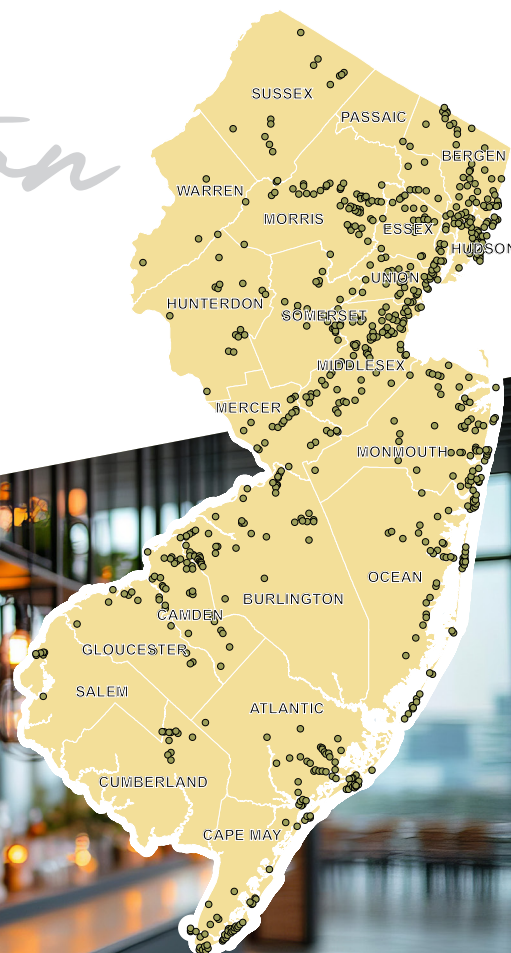
New Jersey's caterers employ about 8,100 workers ensuring your celebration is memorable and delicious.

celebration season



HOTEL ESTABLISHMENTS

New Jersey's 43,000 hotel workers are ready to make your guests feel at home.



¹ Occupational Employment and Wage Survey (OEWS) 2024 estimates.

Technical Note: Unless noted, employment, wage and establishment data in this report is sourced from Quarterly Census of Employment and Wages (QCEW) 2024 annual averages. QCEW represents data for business establishments covered under New Jersey Unemployment Insurance (UI) Law.

The New Jersey Department of Labor and Workforce Development's (NJLW) Office of Research and Information is the singular solution for labor market data needs, combining the power of data and marketing materials to deliver evidence-based research. Our team of local and industry specialists provide technical assistance and information that highlights key New Jersey economic status, such as employment, wages, occupation, workplace safety, and labor force.

This workforce product was funded by a grant awarded by the U.S. Department of Labor's Employment and Training Administration. The product was created by the grantee and does not necessarily reflect the official position of the U.S. Department of Labor. The Department of Labor makes no guarantees, warranties, or assurances of any kind, express or implied, with respect to such information, including any information on linked sites and including, but not limited to, accuracy of the information or its completeness, timeliness, usefulness, adequacy, continued availability, or ownership. This product is copyrighted by the institution that created it. Internal use by an organization and/or personal use by an individual for non-commercial purposes is permissible. All other uses require the prior authorization of the copyright owner.